

# EUROPEAN MICROSCOPY SOCIETY



## Agenda of the GENERAL COUNCIL of EMS

to be held at *emc2012* in Manchester, UK (Tuesday, September 18, 2012, **12.15 till 13.15**, Charter Room 4)

According to the Constitution, a General Council consists of representatives of the National societies for microscopy that have adopted *en-bloc* membership of EMS: those that have less than 300 paying EMS members will have one representative with one vote. Societies with over 300 paying EMS members will have two representatives, each with one vote. Two representatives of ECMA (European Corporate Member Assembly) have voting rights in the General Council. For details on the Constitution, see the EMS website:

<http://www.euremicsoc.org> .

Summary of the rules: No meeting of the General Council shall have the power to make valid decisions unless more than 50% of all societies that decided for *en-bloc* membership of EMS are represented. In case of insufficient participation, decisions are postponed until the next meeting of the General Assembly or can be put-up for electronic voting by the EMS board. The General Council will be chaired by the President of EMS. Decisions of the General Council are taken by a simple majority of votes (>50%; in the event of an equal division of votes, the chairman shall make the final decision).

## Agenda

1. Welcome and confirmation of the agenda of the General Council
2. Presentation and discussion of the EMC 2016 bid
  - 2.1. French Society for Microscopy, Lyon ([Lyon Proposal EMC 2016.pdf](#))
3. Membership fees
  - 3.1. New categories and membership fees for ECMA members
4. Any further matter to be discussed
5. Closing of the meeting

Paul Midgley  
EMS President

Nick Schryvers  
EMS Secretary

---

**President EMS**  
Paul Midgley  
University of Cambridge  
Dept. of Materials Science &  
Metallurgy  
tel.-fax : +44-122 3334561 / 3334567  
e-mail : [pam33@cam.ac.uk](mailto:pam33@cam.ac.uk)

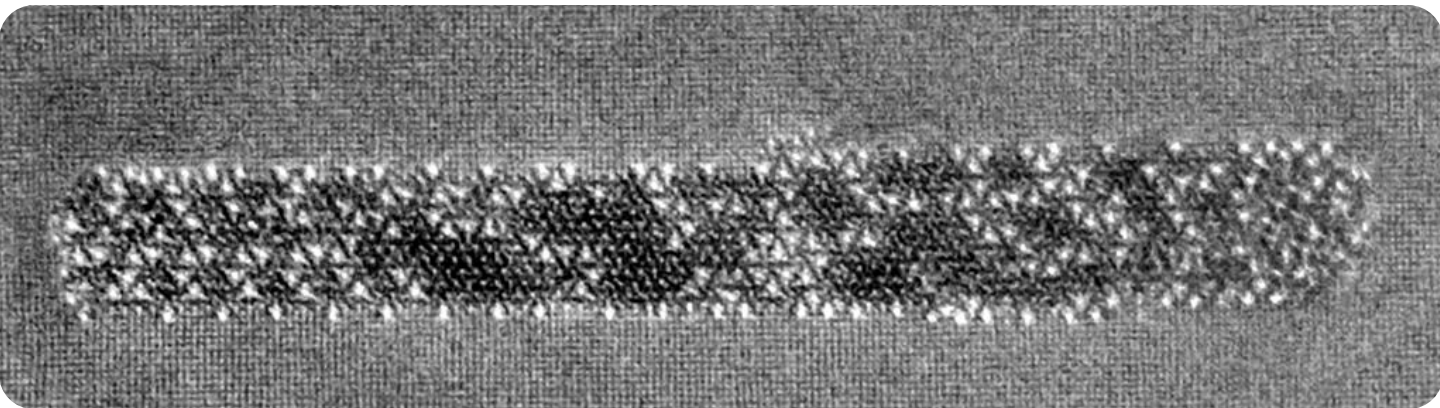
**Secretary EMS**  
Dominique Schryvers  
UA - EMAT  
Antwerp, Belgium  
+32-3 2653247 / 2653257  
[nick.schryvers@ua.ac.be](mailto:nick.schryvers@ua.ac.be)

**Treasurer EMS**  
Christian Schöfer  
Center for Anatomy & Cell Biology  
Medical University of Vienna  
Vienna, Austria  
+43-14 27761338 / 2779613  
[christian.schoefer@meduniwien.ac.at](mailto:christian.schoefer@meduniwien.ac.at)



# Lyon 2016

Bid proposal presented by the French Society of Microscopies



## 16<sup>th</sup> European Microscopy Congress

from August 28<sup>th</sup> to September 2<sup>nd</sup> 2016  
at the Lyon Convention Centre

# Supporting letters

**Letter of support from Laurent Wauquiez**  
(Minister of Higher Education and Research)



MINISTÈRE  
DE L'ENSEIGNEMENT SUPÉRIEUR  
ET DE LA RECHERCHE

*Le Ministre*

Nos Réf. CAB/JB/081863

Paris, le 12 JAN. 2012

Pr. Serin,  
Dr. Livolant,  
Dr. Epicier,  
Dr. Bayle-Guillemaud,

Thank you for your letter of the 30<sup>th</sup> of November regarding the French bid to host and to organize the 16<sup>th</sup> European Microscopy Conference EMC 2016 in France.

As Minister of Higher Education and Research, I am delighted to warmly support the French Society of Microscopies (SF $\mu$ ), and the local organizing committee in Lyon, in their endeavour.

France strongly supports and promotes research and development of new and advanced technologies ; the recent National investment programme (EquipeX, LabeX, IdeX) attests to this policy. Indeed, microscopy fits well with the scope of this scientific and economic strategy for our future.

Allowing the European community to meet in France in 2016 is thus wholly consistent with this action and a recognition of the expertise of the French community. I am enthusiastic in my recommendation.

Yours sincerely,

Laurent WAUQUIEZ

21 rue Descartes 75231 Paris Cedex 05

## The CNRS: French National Center for Scientific Research (Alain Fuchs, President)

Paris, le 09 MARS 2012



cw/ur/D-2012/69

Le Président

[www.cnrs.fr](http://www.cnrs.fr)

Campus Gérard-Mégie  
3, rue Michel-Ange  
75794 Paris cedex 16

01 44 96 40 00  
01 44 96 49 13

Mrs Françoise Livolant

Président de la Société Française des  
Microscopies  
Case 243, Université Pierre et Marie Curie  
4 Place Jussieu  
75252 Paris cedex 05

Dear Mrs Livolant,

I examine with great interest your proposal regarding the French society microscopy bid to organize the 16<sup>th</sup> European congress on Microscopy in 2016 summer at Lyon (France).

As you know, CNRS strongly promotes research and new development of technology in microscopy and related techniques in its laboratories, in particular in those implied in engineering sciences and chemistry.

The organization of this congress in France will allow to promote the French excellence in this field, to initiate by fruitful exchanges, new collaborations and projects between this active community and to strengthen European networks and partnerships in this thematic.

This a wonderful project that I strongly support, and I wish for this EMC2016 in Lyon all success it deserve.

Yours sincerely

  
Alain FUCHS

## The Rhône-Alpes Regional Council (Jean-Jacques Queyranne, President)

R E P U B L I Q U E F R A N Ç A I S E

**Rhône-Alpes** Région

**Jean-Jack QUEYRANNE**  
Président du Conseil régional  
Député du Rhône  
Ancien ministre

Docteur Françoise LIVOLANT  
Présidente - Société Française de  
Microscopie (SFμ)  
Case 243 - Université Pierre et Marie  
Curie  
4 Place Jussieu  
75252 PARIS cedex 05

Nos réf. : DEF13S / 12 I5540 C0096

Lyon, le 17 FEV. 2012

Objet : Lettre de soutien de la Région Rhône-Alpes  
au projet de Congrès européen de Microscopie - Lyon 2016

Madame,

La Société Française de Microscopie a proposé d'accueillir et d'organiser à Lyon en juin 2016 sous les auspices de la Société de Microscopie Européenne, le Congrès Européen de Microscopie.

La Région Rhône-Alpes représente la deuxième plus grande économie de France et est un acteur majeur de la recherche publique et privée. La Région compte un nombre considérable d'entreprises innovantes en investissant régulièrement dans des projets de recherche. La microscopie et les techniques connexes apportent une contribution importante aux thématiques précédemment citées. C'est donc avec grand plaisir et enthousiasme que je soutiens l'initiative de la Société Française de Microscopie de proposer sa candidature pour accueillir le congrès européen de microscopie en 2016 à Lyon.

La Région Rhône-Alpes soutient fortement la recherche dans plusieurs domaines comme la santé, l'environnement, l'écologie et le développement durable, et contribue au développement de technologies innovantes en investissant régulièrement dans des projets de recherche. La microscopie et les techniques connexes apportent une contribution importante aux thématiques précédemment citées. C'est donc avec grand plaisir et enthousiasme que je soutiens l'initiative de la Société Française de Microscopie de proposer sa candidature pour accueillir le congrès européen de microscopie en 2016 à Lyon.

Je vous prie d'agréer, Madame, l'expression de mes salutations les meilleures.



Jean-Jack QUEYRANNE

Téléphone : 04 26 73 40 00  
Télécopie : 04 26 73 42 18

Conseil régional Rhône-Alpes - 1, esplanade François Mitterrand - CS 20033 - 69269 Lyon Cedex 02  
[www.rhonealpes.fr](http://www.rhonealpes.fr)

Pour venir à la Région, utilisons les transports en commun : Tramway 1 - Bus n° 63 - 8 - 91  
Cars du Rhône lignes 105 - 125 - 185 - Arrêt Montrochet / Hôtel de Région

**The city of Lyon**  
(Gérard Collomb, Mayor)

*Le Maire de Lyon*

*Dear Mrs Livolant,*

*I learn with great interest that the French Society of Microscopy, together with the European Society, intends to organize the 16th European Congress on Microscopy during the 2016 summer in Lyon.*

*The pro-activity of the Rhône-Alpes CNRS Research Center within the support of local authorities and scientific teams, both locally and nationally, recognized beyond our borders, will allow the event to be a success.*

*Furthermore, the accessibility of our destination, our rich cultural heritage, tourism and gastronomy, combined with the Lyon Congress Centre's state of the art infrastructure will all contribute to welcoming you in the best possible conditions.*

*You can be assured of my fullest support.*

*Please accept, Mrs Livolant, the expression of my highest esteem.*

Gérard Collomb



*Madame Françoise LIVOLANT  
Présidente de la Société Française des Microscopies  
Case 243, Université P et M Curie  
4 place Jussieu  
75252 PARIS Cedex 05*

2012/Fmdh

*Hôtel de Ville - 1, Place de la Comédie - B P 1005 - 69205 Lyon cedex 01 - Tél. 04 78 10 30 30*



**The 'PRES' of Lyon**  
(Michel Lussault, President)

Lyon, January 12th, 2012

The President of the Université de Lyon  
to  
the Executive board of the EMS

**2016 European Microscopy Congress**

I have been informed that the French Microscopy Society (SF $\mu$ ) intends to host the 2016 European Microscopy Congress in Lyon. Lyon boasts a rich diversity of 18 public and private Higher Education & Research institutions strengthened through its alliance with its neighboring city Saint-Etienne.

Microscopy and related techniques play a key role in the chemical, physical, materials and life sciences. Numerous platforms and laboratories are very active in these fields, and the organization of this event in Lyon under the auspices of the SF $\mu$  and the European society (EMS) is thus a very exciting prospect. I am further confident that the close relationships established in the past between local and national scientific communities, and that continue to be developed with other European countries in the framework of multi-national projects, networks and partnerships, are a guarantee of a high quality and fruitful meeting.

In addition to these scientific arguments, the Université de Lyon has several agreements with the Lyon Convention Center where the event is planned to be held.

All these elements lead me to confidently support this initiative and I'm delighted to wish great success for EMC-2016.

Michel LUSSAULT  
Professor  
President of the Université de Lyon

Université de Lyon  
Quartier Sergent Blandan  
37 rue du repos  
69361 Lyon cedex 07  
France  
Tel: +33 4 37 37 26 70  
Fax: +33 4 37 37 26 71  
[www.universite-lyon.fr](http://www.universite-lyon.fr)





# CONTENTS

Supporting Letters.....	p.3
<b>CONTENTS</b> .....	p.9
<b>1. Welcome to France!</b> .....	p.11
<b>2. The BID Committee</b> .....	p.13
<b>2.1 Who are we?</b> .....	p.13
<b>2.2 Our ambition for EMC 2016</b> .....	p.14
<b>3. Organisation beyond the BID</b> .....	p.15
<b>4. Science and programme</b> .....	p.17
<b>4.1 Outline of the scientific programme</b> .....	p.17
<b>4.2 Students and young scientists</b> .....	p.20
<b>5. Welcome to Lyon</b> .....	p.21
<b>5.1 A city to live</b> .....	p.21
<b>5.2 Urban projects in harmony with sustainable development</b> .....	p.22
<b>5.3 An international city</b> .....	p.23
<b>6. The Congress site</b> .....	p.25
<b>6.1 Why choose the Lyon Convention Centre?</b> .....	p.25
<b>6.2 A few references</b> .....	p.26
<b>6.3 A quick glance</b> .....	p.27
<b>6.4 Spaces for EMC 2016</b> .....	p.28
<b>6.5 Guided tour</b> .....	p.29
<b>7. Coming to Lyon</b> .....	p.31
<b>7.1 At the crossroads from Europe</b> .....	p.31
<b>7.2 Lyon <i>intra-muros</i></b> .....	p.33
<b>8. Accommodation and facilities</b> .....	p.35
<b>8.1 Accommodation for all</b> .....	p.35
<b>8.2 Students facilities</b> .....	p.37
<b>9. The social scene</b> .....	p.39
<b>9.1 Reception and banquet</b> .....	p.39
<b>9.2 Accompanying persons: not to be missed!</b> .....	p.40
<b>9.3 Touring options</b> .....	p.41
<b>10. Budget</b> .....	p.43
<b>10.1 Overview</b> .....	p.43
<b>10.2 Finances (2013 rates)</b> .....	p.45
<b>11. Summary</b> .....	p.47



# 1. Welcome to France!

It is my pleasure to present the bid from the French Society of Microscopies (Sf $\mu$ ) to host the 16<sup>th</sup> European Microscopy Congress in Lyon from August 28 to September 2, 2016.

Founded in 1959 under the name of "Société Française de Microscopie Electronique (SFME), and renamed as "Société Française des Microscopies"(Sf $\mu$ ) to reflect the opening of our community to new developments, our Society gathers physicists, biologists and chemists who explore all domains of advanced imaging techniques and spectroscopies. Many conferences have been organized over the years, including the International Microscopy Conferences held in Grenoble in 1970 and in Paris in 1994. We however never hosted the European Microscopy Conference. We would be very honoured to be selected to organize this important event.

Lyon is known for its historical and architectural landmarks and is a « *UNESCO World Heritage Site* ». The city is historically recognized as an important area for the production and weaving of silk and in modern times has developed a reputation as the capital of gastronomy in France. It is also the city where Auguste and Louis Lumière invented the cinematograph. Lyon is also a major centre for chemical, pharmaceutical, and biotech industries. The city, in the heart of Europe, can be very easily reached from all over the world and the Lyon Convention Center is ideally situated, close to the historical centre by public transport.

The strength of our candidacy lies in the strong motivation of the local team supported by the unlimited enthusiasm of the whole scientific community, all aiming at the great success of EMC16 in Lyon. We are really confident that we can make it a wonderful scientific event. Keynote and invited speakers working at the cutting edge of new microscopy developments in physical and life sciences and technology will ensure a stimulating program, completed by presentations on next-generation instrumentation and new approaches to data acquisition, reconstruction, visualisation and analysis. Within a domain where technology progresses rapidly by steps, we will pay attention to offer free space and open time slots for spontaneous discussions and yet unplanned presentations that will emerge on hot topics. A special attention will be paid to attract young researchers by offering them attractive conditions for attendance, travelling and lodging.

I invite you to discover in this document the scientific program, proposed venue and facilities, local accommodation, transport and travel conditions, and all details that were selected by the organizing committee to let you imagine this Conference in France.

Looking forward for warmly welcoming you in Lyon,



<http://www.sfm.fr>

*P. Livolant*

Françoise Livolant  
President of the French Society of Microscopies (Sf $\mu$ )



# 2. The BID Committee

## 2.1 Who are we?

**Congress PRESIDENT: Dr. Thierry EPICIER**

Materials, Engineering and Science (MATEIS), National Institute for Applied Science de Lyon (INSA-Lyon), Villeurbanne, [thierry.epicier@insa-lyon.fr](mailto:thierry.epicier@insa-lyon.fr)



**Congress vice-PRESIDENT: Dr. Pascale BAYLE-GUILLEMAUD**

Institute for NanoSciences and Cryogenic (INAC), Centre for Atomic Energy (CEA), Grenoble, [pascale.bayle-guillemaud@cea.fr](mailto:pascale.bayle-guillemaud@cea.fr)



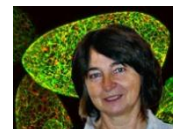
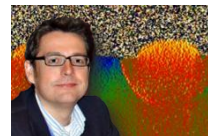
**Scientific co-Chair (Physics): Prof. Odile STEPHAN**

Laboratory of Solid State Physics (LPS), University Paris-Sud, Orsay, [stephan@lps.u-psud.fr](mailto:stephan@lps.u-psud.fr)



**Scientific co-Chair (Physics): Dr. Martin HYTCH**

Centre for Microstructural Studies and Elaboration of Materials (CEMES), CNRS, Toulouse, [hytch@cemes.fr](mailto:hytch@cemes.fr)



**Scientific co-Chair (Biology): Dr. Béatrice SATIAT-JEUNEMAITRE**

Institute of Plant Sciences (ISV), CNRS, Gif-sur-Yvette [Beatrice.Satiat-Jeunemaitre@isv.cnrs-gif.fr](mailto:Beatrice.Satiat-Jeunemaitre@isv.cnrs-gif.fr)

**Scientific co-Chair (Biology): Dr. Denis CHRETIEN**

Institute of Genetics and Development of Rennes, University of Rennes, Rennes, [denis.chretien@univ-rennes1.fr](mailto:denis.chretien@univ-rennes1.fr)



**SFμ President: Dr. Françoise LIVOLANT**

Laboratory of Solid State Physics (LPS), University Paris-Sud, Orsay, [livolant@lps.u-psud.fr](mailto:livolant@lps.u-psud.fr)

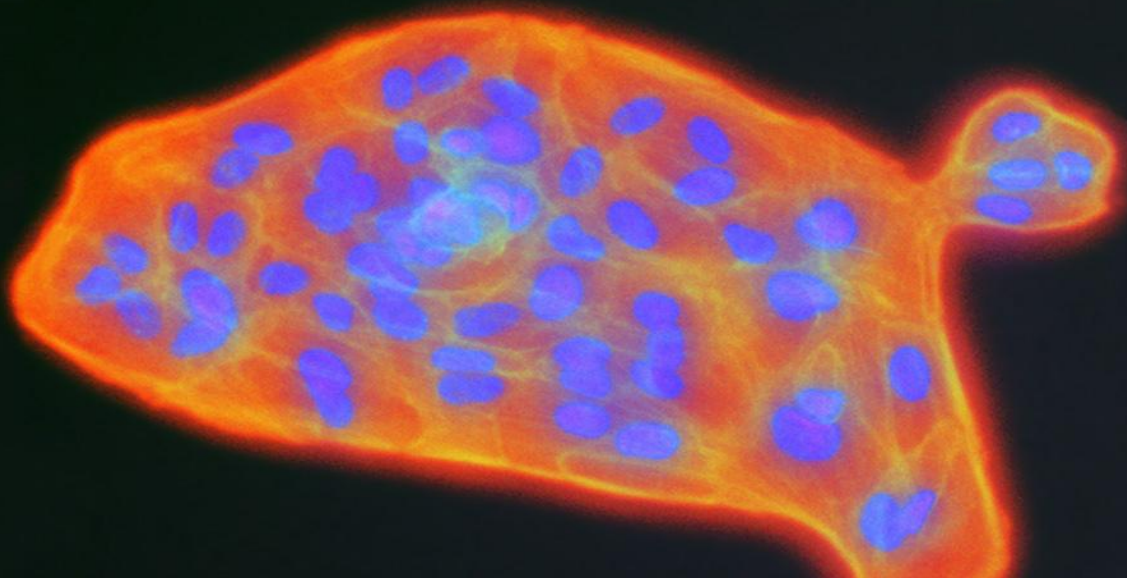


**SFμ vice-President: Prof. Virginie SERIN**

Centre for Microstructural Studies and Elaboration of Materials (CEMES), CNRS, Toulouse, [virginie.serin@cemes.fr](mailto:virginie.serin@cemes.fr)



# 2. The BID Committee



## 2.2 Our ambition for EMC 2016

It has been many years since the international microscopy conferences were held in Grenoble in 1970 and then later in Paris in 1994. Since then, the French microscopy community has continued to be fully engaged in both the international and European scene. The French Society of Microscopies (Sfμ) is now proud to be able to present this bid proposal to hold the next 16<sup>th</sup> European Microscopy Congress in Lyon 2016.

The Sfμ has gathered a motivated national and local team for the bid committee which is constituted by a congress president and vice-president, four scientific co-chairs for physics and biology, and the Sfμ president and vice president. This bid committee has the pleasure to propose the Convention Centre in Lyon for the venue of the EMC2016. The proposed dates are from Sunday 28<sup>th</sup> August to Friday 2<sup>nd</sup> September 2016.

Since its creation, it has been the aim of the Sfμ to organise events linked to electron microscopy in France. Its national meeting is held in host cities around France every two years. Moreover, the society has always encouraged integration with its neighbours and has organised its national congress in both Liège, Barcelona and Lausanne. This national meeting always has a large number of attendees (more than 300 for the last meeting). In addition to the scientific content, important attention has always been given to the exhibition and to help students and young researchers attend the congress.

The Society also promotes national workshops that are dedicated to focused techniques related to microscopy, and training of its community by helping the organisation of national or international schools. The Sfμ also supports scientific publishing and is the co-publisher of books, and journals including *Biology of the Cell* and the *European Physical Journal* (Applied Physics section).

The Lyon Convention Centre is an ideal place to host the 16<sup>th</sup> EMC. Its location is close to the city centre, it has a number of rooms that can be used for presentations, including one which can hold over 3000 people, it has a large surface area that can comfortably hold the exhibition and poster sessions, along with a pleasant riverside location containing bars, restaurants and a pedestrian area. In addition it contains a museum, ample parking and many hotels nearby. A highly professional and experienced team (GL events) will assist the future organising committee to make this important event a success. The future conference committee with the help of the French Society and its staff will manage the event with the additional help of professional advices from a PCO (Professional Congress Organiser) in order to assure a perfect organisation and make EMC 2016 an unforgettable congress. The bid committee has local support from the mayor of the city of Lyon, from the regional council and the University of Lyon. This event is also directly supported by the French Ministry of Research and the CNRS.

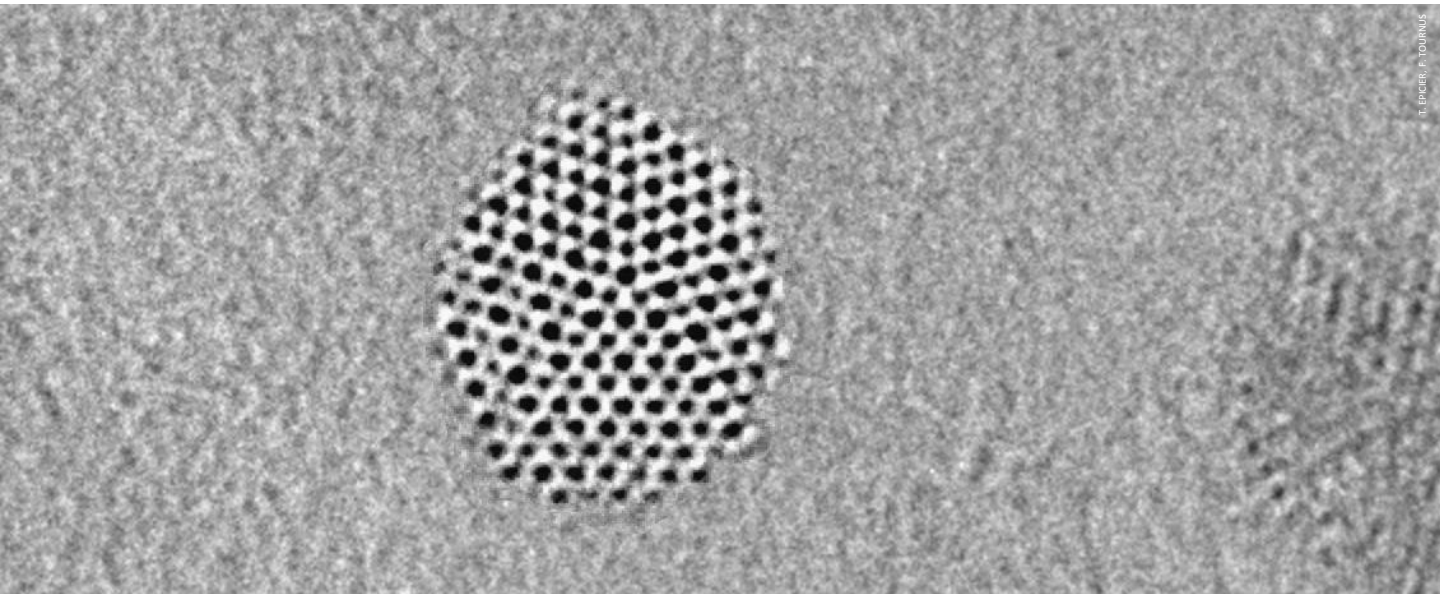
It is our aim to propose the most successful event for the 16<sup>th</sup> EMC meeting, to promote symposia containing state-of-the-art scientific and technical contributions, to hold a large exhibition to promote the latest technical developments, and to help students and young researchers to attend. To complement the EMC program, we intend to organise and encourage satellite meetings that will be integrated into the scientific exchange. Our aim is to make as pleasant as possible the stay of our guests in Lyon in 2016!

For the bid committee,

Thierry EPICIER

Pascale BAYLE-GUILLEMAUD

# 3. Organisation beyond the BID



## Congress Organising Committee (COC)

If the BID is successful, the COC will be an enlarged version of the BID committee, with the aim to cover all aspects of the French microscopy community. It will be proposed under the auspices of the **SFμ, French Society of Microscopies** and in liaison with the **EMS** for an European vision.

The COC will thus be an operative working group, in charge of supervising the tasks devoted to the Lyon Convention Centre, in a close relationship with the Professional Congress Organiser (PCO) which will be chosen to provide the effective organisation for the website, the registration, submission and management of abstracts, publication of Proceedings, accommodation, exhibition and social side activities. The COC will also be in charge of parallel events, such as possible workshops and/or satellite scientific events before, during and/or after EMC 2016. In these prerogatives, the COC will be constantly assisted by the **SFμ**, thus guaranteeing the best scientific coherency.

## International Scientific Advisory Committee (ISAC)

One of the first tasks will be to set up an international scientific advisory committee (ISAC). It will be composed of leading researchers from a wide field of microscopies, from optical, photonic techniques to electron microscopy, across various associated techniques for macro-characterization and spectroscopic approaches.

This Committee will assist the organisers in building an inspiring programme, reviewing the active fields in both Materials and Life Sciences, including the selection of plenary and keynote lectures.

## Our vision...

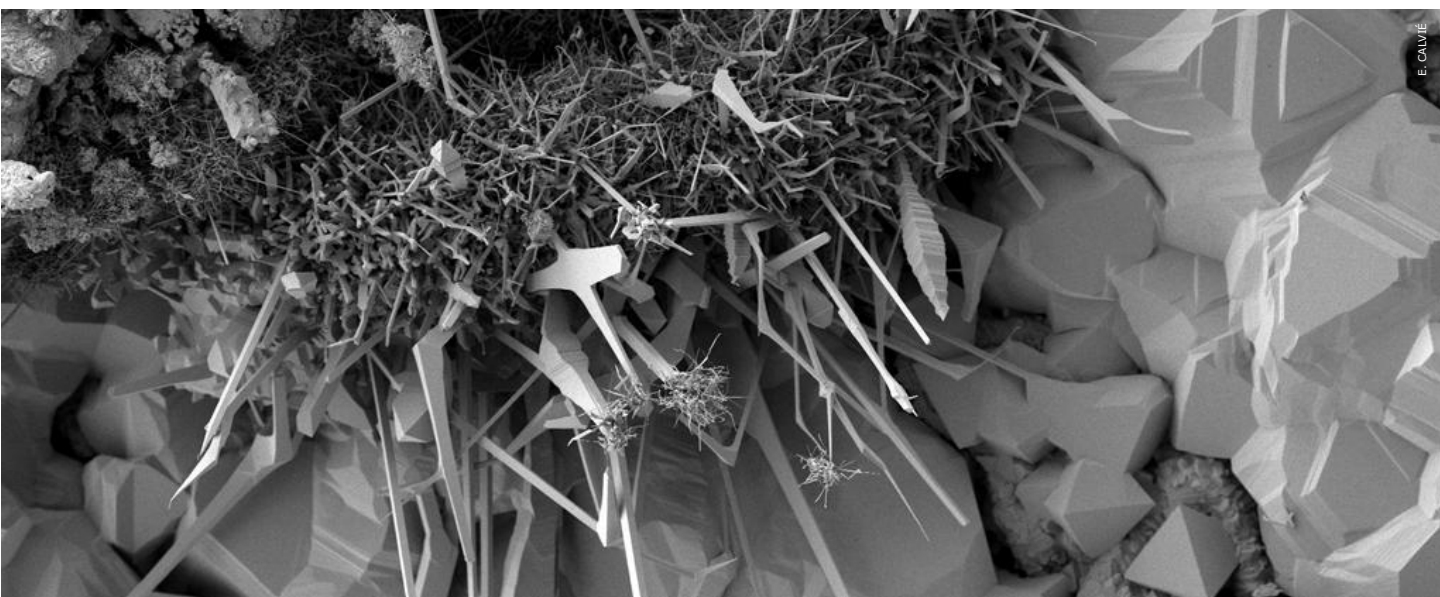
As detailed in section 4, the general scientific organisation of the Congress will be built around the applications and developments of microscopies in physical and biological domains. The scientific co-chair teams will make all possible efforts to promote inter- and trans-disciplinary works, from Materials to Life Science, micro-scale to sub-nanoscale.

We further aim at organising satellite workshops for young scientists. Several platforms exist at different locations in France, which offer state-of-the-art instrumentation in the field of optical and electron microscopies.





# 4. Science and programme



## 4.1 Outline of the scientific programme

EMC 2016 will promote microscopy in its broadest diversity to cover the largest fields of interest for both the life and physical science communities. In consultation with the International Scientific Advisory Committee, the Conference Organising Committee will select topics that reflect the latest developments in electron, light, ion and scanning probe microscopies. There will be an emphasis on interdisciplinary themes that will favour the gathering of the different communities and promote scientific approaches that correlate diverse expertise.

A natural emphasis will be put on instrumental and methodological issues with symposia exploring up-to-date and emerging developments in imaging, spectroscopy, data acquisition and processing. The programme will be themed around how microscopy helps to address the challenges that are present in the major applied topics in the physical sciences (e.g. cutting edge technologies, design of new alloys and ceramics, new nano or low-dimensional materials and functional materials that hold fundamental scientific or technological interest in metallurgy, magnetism, photonics or energy applications) and for life science (HR optical microscopy in morphogenesis and developmental biology, *in situ* imaging of the cell at the nanoscale, conformational changes in macromolecular complexes, multiscale and nanoscale correlative microscopies).

## 4.2 Societal issues

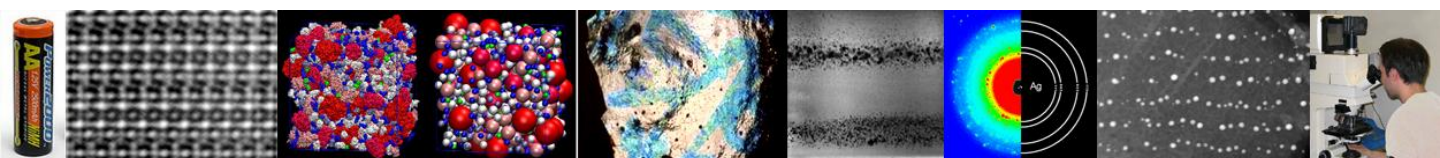
A particular attention will be paid to promote discussions on societal issues by proposing transversal symposia and plenary sessions on topics where microscopy is providing research solutions. It is indeed too early to detail these fields according to the clear forthcoming developments in techniques, methods and data analysis between now and 2016, but one can nevertheless cite ongoing challenges, for example in energy and environmental sustainability, health, and cultural heritage.

**Energy** is a key issue for the 21<sup>st</sup> century. Energy storage, conversion devices are essential for our future. Analytical, environmental and *in situ* electron microscopy, with atmospheric and/or liquid cells that can be used to provide breakthroughs in our understanding of the behaviour and performances of new batteries, catalysts and reactive composites devices in their actual working conditions down the sub-nanometre scale.

**Environmental sustainability** is an important domain which has to be approached from a multi-disciplinary point of view. This will involve biologists, physicists, chemists, doctors and engineers. A major issue of agricultural applications is to meet global challenges in nutritional quality, crop yield, pest resistance and environmental conservation. Plant cell biology plays a key role in addressing and answering major questions in plant science. An impressive portfolio of experimental tools is continuously being developed to image functional organisation within living cells and tissues by multi-scale microscopy approaches. Materials sciences are also providing new methods of sustainable development that respect our environment, in terms of wastes, pollution and non-biodegradable materials. The development of the lighter materials that are used in transportation industries is an essential factor in reducing energy consumption. Developments of new materials for nuclear applications, automotive and aeronautic industries, housing and construction are all aided by the application of advanced microscopies



**Health** will always be of great importance to humanity. The understanding of the cell, organized in subtle ensembles of nano-machines that fulfill specific functions, is continuously modifying the perception that we have of how cells and tissues function and cooperate to build complex living organisms. To increase such knowledge, new generations of electron microscopes, image detectors and image analysis software that allow three-dimensional reconstruction of cells and tissues in a close to native state and at a nanometer scale have been developed. By combining information obtained at different scales as permitted by photonic, electron microscopies and other techniques such as NMR, X-ray crystallography, we can hope in a near future to draw a proteome atlas of the cell at atomic resolution. In this perspective, nanotechnologies will have a fundamental role to play, by providing new nano-machines to explore the cell interior, or probes that can be traced at the light and electron microscope level, allowing fully correlative approaches to be developed. Furthermore, microscopy plays an important role in new therapies for organisms disorders, cancer and neurodegenerative diseases, in the development of elaborate systems to deliver bioactive molecules in a controlled manner taking into account their ability to go across living organisms, and the capacity to increase their bio-availability within tissue or cells. Microscopy is a key cornerstone in the preparative phase of such strategies, where the molecular organization of various drug vectors is deciphered (liposomes, nanocapsules, nanoparticles, etc). All this will promote the expanding fields of nanotechnologies and nano-biotechnologies.



**Cultural heritage** is a topic of great interest in Lyon which contains Europe's largest Renaissance area, a city listed as a UNESCO World Heritage site. We should remember that microscopy techniques are required tools that are used to analyse and understand the specific microstructures of metal-based alloys that hold the secret 'alchemy' of chords, or hammers of old musical instruments, violins and harpsichords which provide them with unique and subtle sounds and harmonic equilibrium. We should remember that nano-microscopy and spectroscopy help to understand the effect of nanoparticles that were used in ancient potteries, in middle-age stained glass windows to provide their optical properties and colour responses. As for many other characterisation methods, microscopy in all its forms contributes to the understanding of arts, from the conception of art pieces to the mechanisms of their degradation with time, an essential approach to preserve this precious cultural heritage.

Symposia will cover:

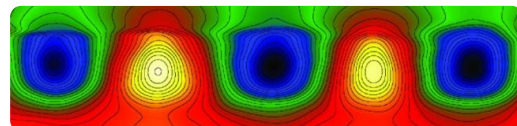
## Instrumentation: from techniques to methods



- Multi imaging (4D, 3D-tomography, cryo-tomo, FIB, APT...)
- Nanolab EM (variable pressure SEM, gas reaction, high and low temperatures, nanomechanics, environmental SEM and TEM, magnetizing and electrical biasing...)
- Specimen preparation and nanofabrication & nanomanipulation (FIB, optical tweezers, microfluidics, contacting, nanolithography, fluorescent probes, bio sensors ... )
- Data acquisitions and image processing (new detectors, filtering, deconvolution, deblurring, multiviews fusion, objects segmentation, objects tracking, remote, statistics, automation, parallel processing ...)
- SEM (EBSD, EBIC, low voltage, HR ...)
- New instrumentations (correctors, sources, spectrometers, detectors, monochromators, synchronized beams, ...)
- Quantitative TEM and STEM (HR imaging, electron diffraction and electron precession, holography, Lorentz, phase plate imaging ...)
- Spectro-microscopies (EELS, EDS, WDS, EPMA, CL, XAS, RIXS ...)
- Super resolution in Light microscopy (PALM, STORM, STED, SIM, sptPALM)
- Video Microscopy
- Confocal Microscopy and F-techniques (FRAP, FRET, FLIM, FCS...)
- Theory and modelling in microscopy
- Correlative/integrative approaches (light, EM, spectroscopies, X-rays, APT ...)
- Scanning Probe Microscopies (STM, SNOM, AFM, ...)
- Other microscopies (emerging microscopies, Ions microscopies, X-Ray, lensless .. )
- Non linear microscopy and new contrasts (THG, SHG, CARS,...)

## Physical Sciences: from nanotechnology To compounds and systems

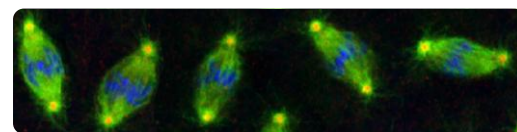
- Nanotechnology and low dimensional systems
- Semiconductors
- Metallurgy
- Spintronic materials
- Plasmonics and metamaterials
- Composites
- Soft materials (polymers, liquid crystals)



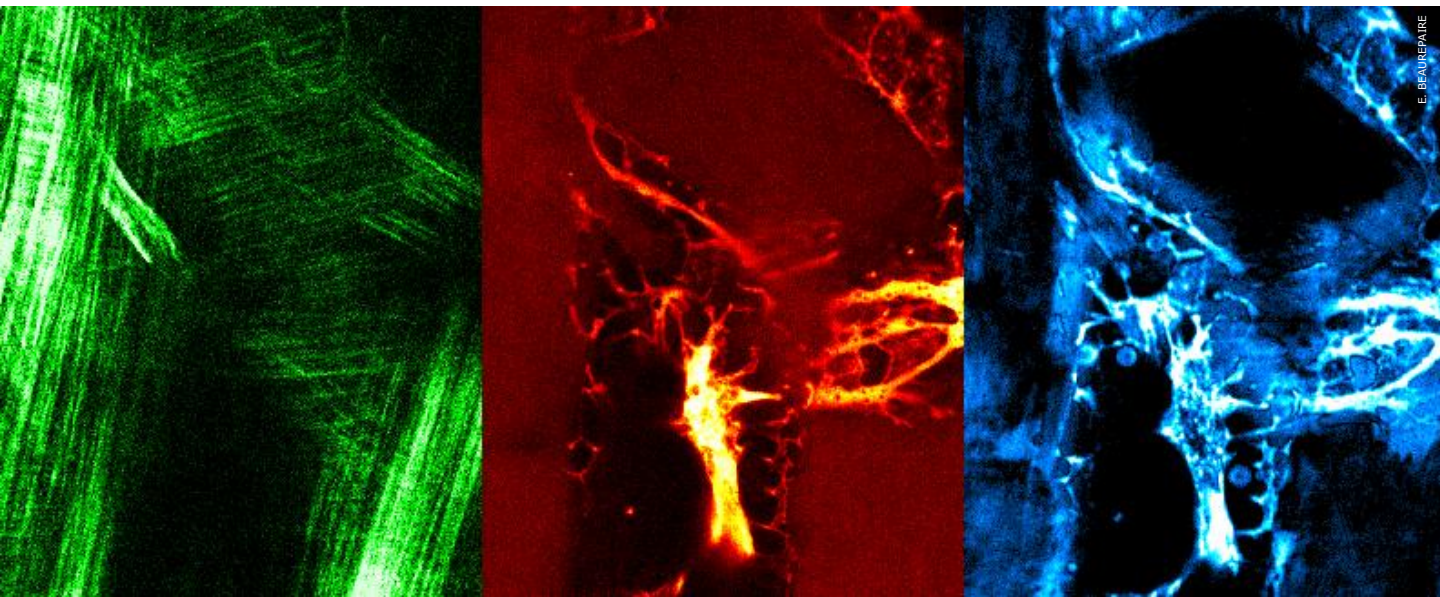
- Superconductors
- Magnetic materials
- Catalysts
- Geology/mineralogy
- Ceramics

## Life Sciences: from macromolecules to cells and organisms

- Macromolecular assemblies
- Nucleus architecture and function
- Cytoskeleton (microtubes, actin, IF, centrosomes, cilia, axonemes)
- Organelles (ER, mitochondria,...)
- Membranes (receptors,...)
- Micro-organisms and pathogens (viruses, bacteria, parasites, mycology,...)
- Organisms (in situ, imagery of tissues, small animal,...)
- Plant cells
- Cell cycle
- Extra-cellular matrix
- Differentiation
- Neurosciences



# 4. Science and programme



## 4.2 Students and young scientists

Attracting as many **young scientists (YS)** as possible is one of the major goals pursued by the Congress Organising Committee.

Young scientists are essentially PhD students and early-career researchers in non-permanent positions. Attending an international conference such as the EMC series, constitutes an unique opportunity in their research experience. Indeed, it is also a unique opportunity for our laboratories to share their passion for research and encourage them to join our teams.

In addition to pursuing efforts to get secure private funding for scholarships, or any other sponsoring source for scholarships, we intend to provide financial support for more than one third of the YS participants:

- By offering free admission
- By providing travel / accommodation scholarships in addition to free inscription

The final quotas for each kind of support will be adjusted on the basis of merit, according to the financial means available in the final months of the Congress preparation.



As it will be shown in section 8.2, accommodation facilities will also be arranged for YS. The city of Lyon will also provide them with opportunities to enjoy the 'night life'.

# 5. Welcome to Lyon



## 5.1 A city to live

### Lyon in simple key features

With 1.348 million inhabitants over 43.7 km<sup>2</sup> in Greater Lyon, Lyon is the 3<sup>rd</sup> largest city in France, the largest one in the second French region (Rhône-Alpes, with more than 5 millions people). Lyon is indeed a fairly good equilibrium between the metropole with its advantages regarding culture, transportations, accommodations, and the reasonable sized city with its quality of life.



Lyon is a city where famous architects developed recent projects for several buildings: Jean Nouvel (the Opera), Renzo Piano (Amphitheatre of the Cité Internationale), Santiago Calatrava (TGV station of the international airport Lyon Saint Exupéry), Jean-Michel Wilmotte, Rudy Ricciotti, Jean-Paul Viguier, Jacques Herzog, Pierre de Meuron (the 'Confluence')...

According to recent reviews, Lyon ranks 38<sup>th</sup> city in the world for its quality of life (before metropolises like London or Madrid), and 32<sup>nd</sup> in the most ecologic cities (*Mercer 2010*); in the 'Top 15' of European cities for its quality of life and the quality of its environment (*Cushman & Wakefield 2010*). Lyon possesses one of the greatest urban parks in Europe (105 hectares): la Tête d'Or, hosting a free zoological park.

### Culinary arts capital of France

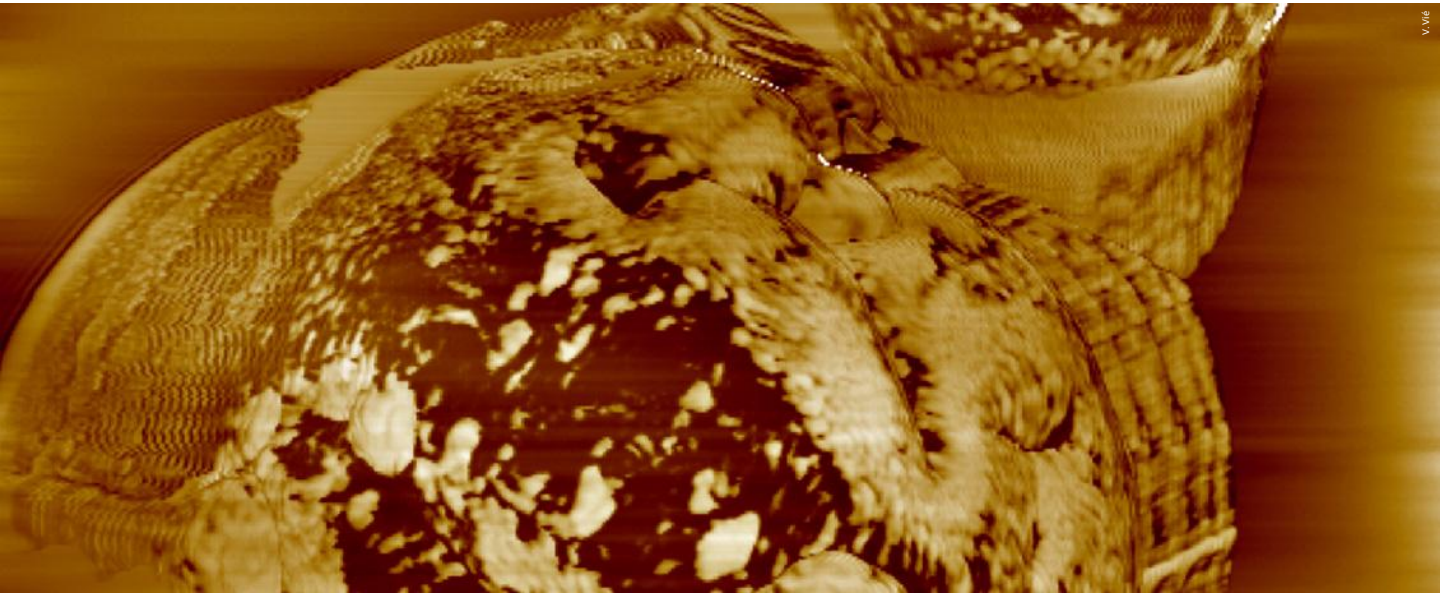
The reputation of Lyon for fine cuisine was established centuries ago. Today it is maintained by several hundred chefs; the Lyon region contains the largest number of 'starred' Chefs whose names are well known all over the world: Paul Bocuse, Jean-Paul Lacombe, Guy Lassausaie, Pierre Orsi, Gérard Vignat, Nicolas Le Bec, Mathieu Viannay... Lyon hosts **1001 restaurants and "bouchons"** (typical regional Lyon cuisine). A good reason for discovering areas that each have their own character and flavours is **Wines**: from Beaujolais and Burgundy in the north, Coteaux du Lyonnais in the west and Côtes du Rhône in the south, some of France's finest vineyards begin at the gates of Lyon.



### Major cultural events: often festive, always fascinating

Among all cultural events in Lyon during the year, there will be an opportunity to enjoy the premises of the '**Biennale festival of dance**' at the moment of the EMC meeting in September 2016. It is the largest dance "défilé" in Europe and the most festive and popular event in the greater Lyon. It happens every two years and alternates with the Biennale festival of contemporary Arts.

# 5. Welcome to Lyon



## 5.2 Urban projects in harmony with sustainable development

### The Banks of the River Rhone

Since the refurbishing of the Rhône river banks, beautiful and new perspectives of the city have been revealed to walkers over a 5 kilometre stretch of modern and delightful walkways.

According to Lyonnais Mayor Gérard Collomb, these profound modifications of the Rhône river banks give the city "a new philosophy and a peaceful family atmosphere". The cars and car parking spaces that once filled these banks have been replaced by pedestrians, rollers, skaters and cyclers.

### Lyon Confluence: a reference in energy efficiency

The Lyon Confluence project has been exclusively designed with sustainable development in mind:

- 23% of council housing and High quality environmental guidelines for all buildings and public areas
- Developments of green transport modes
- Rehabilitation of polluted soil

In 2004, the Lyon Confluence project qualified to be part of the European Union Concerto programme which encourages investments in favour of energy conservation in housing and office constructions. Funds totalling 3.5 million € were awarded by the European Union to the project in order to cover extra costs brought by energy saving and sustainability initiatives: 40% cuts in energy needs compared to today's standards thanks to both the bioclimatic design of the buildings and to insulation and ventilation.

### The Cité Internationale

From design to construction, the Cité Internationale hosting the proposed location for EMC 2016 has always respected sustainable development. Emphasis has been placed on respected sustainable development and renewable energy.



# 5. Welcome to Lyon



## 5.3 An international city

With its surplus trade balance, the Lyon region is home to a dynamic and diversified industrial network whose added value is higher than the European average.

### Intelligence and research

The Lyon area is pursuing a strategy that involves the coming-together of research, higher education and companies, whilst continuing to enhance high-potential sites in the context of a coherent development policy. The players in the research and industry sectors work constantly alongside each other within the context of the 7 technology centres in Lyon.

The Lyon area includes 144 000 students in 4 universities and over 20 "Grandes Écoles": École Normale Supérieure Sciences / Lettres et Sciences Humaines, Institut National des Sciences Appliquées (INSA), École Centrale de Lyon (ECL), École Nationale des Travaux Publics de l'État (ENTPE), ISARA, École Catholique d'Arts et Métiers (ECAM), École Nationale Vétérinaire de Lyon, Conservatoire National Supérieur de Musique, École Française des Attachés de Presse, Groupe École de Management de Lyon, etc.

### 5 competitiveness clusters in Lyon

**Global competitiveness cluster LYONBIOPOLE:** Biotechnologies, health



**Globally-oriented competitiveness cluster AXELERA:** Chemicals, environment



**LYON URBAN TRUCK & BUS competitiveness cluster:** Transport systems, collective urban transport of people and goods by bus or lorry



**IMAGINOVE competitiveness cluster:** Digital leisure and entertainment: video, games, cinema, audiovisual, animation, interactive multimedia



**TECHTERA competitiveness cluster:** Technical fabrics, technical textiles







# 6. The Congress site



## 6.1 Why choose the Lyon Convention Centre?

### Because the LCC is:

- A subsidiary of the **GL EVENTS** group, recognized around the world for its expertise in the events industry. The Group's network of venues today represents **37 convention and exhibition centres** around the world. GL events has an annual growth of more than 16%. 
- In an **exceptional environment**. The complex is ideally situated between the Rhône and the Parc de la Tête d'Or, in the heart of the Cité Internationale, designed by Renzo Piano.
- **Numerous services** are provided in the Cité: more than 500 three and four star hotel rooms including the Hilton, leisure facilities (cinemas, casino, bars & restaurants), a Business Centre, a company caretaker service, numerous shops.
- **Quick and easy access**: 15 minutes from the city centre on public transport, 12 minutes from the Part Dieu TGV station and less than 30 minutes from Saint Exupéry international airport.
- A **modern and recently built venue** offering the latest state-of-the-art equipment:
  - A **totally modular** surface area of 25 000 sqm, which can welcome 19 000 people and benefits from natural daylight.
  - 3 amphitheatres of 300, 900 and 3 000 places designed for plenary meetings and shows.
  - An exhibition area of 8 400sqm on a single level which can also welcome more than 7 000 people for cocktails or up to 6 000 people for a conference.
  - 26 fully-equipped conference rooms which can hold from 50 to 450 people.
  - Totally integrated services in all event areas: sound, video, lighting, decoration, wifi, fibre optic network: the guarantee of **«turn-key» services** from the start to the finish of the congress.

### Because the LCC has:

- Welcomed over **4 million delegates** and organised more than **5 000 events since its opening**.
- A **permanent staff of 60 specialists** in events management.
- A single contact, **the project manager**, whose mission is to coordinate all professions and services.
- An **ecological approach**: an ecological attitude for all employees, a eco-friendly venue (bioclimatic control, photovoltaic panels, garden areas certified ISO 14 001).
- The desire to **share values** of excellence, trust, respect, team spirit and integrity, and the ambition to make each event a unique and unforgettable moment.

# 6. The Congress site



## 6.2 A few references

### Recently hosted...

- World Forum of Living Sciences
- Cartoon Movies
- Bocuse d'Or Gala evening
- The Béjart Ballet of Lausanne
- European Blood and Marrow Transplantation Congress – 2007
- International Biomass Congress 2010
- European Symposium on Clinical Pharmacy – 2010
- French National Cinema Congress - FNCF 2011
- Polymer Science – 2011
- ESERA- European Science Education Research Association 2011
- World Wide Web Conference 2012 (1500 delegates)

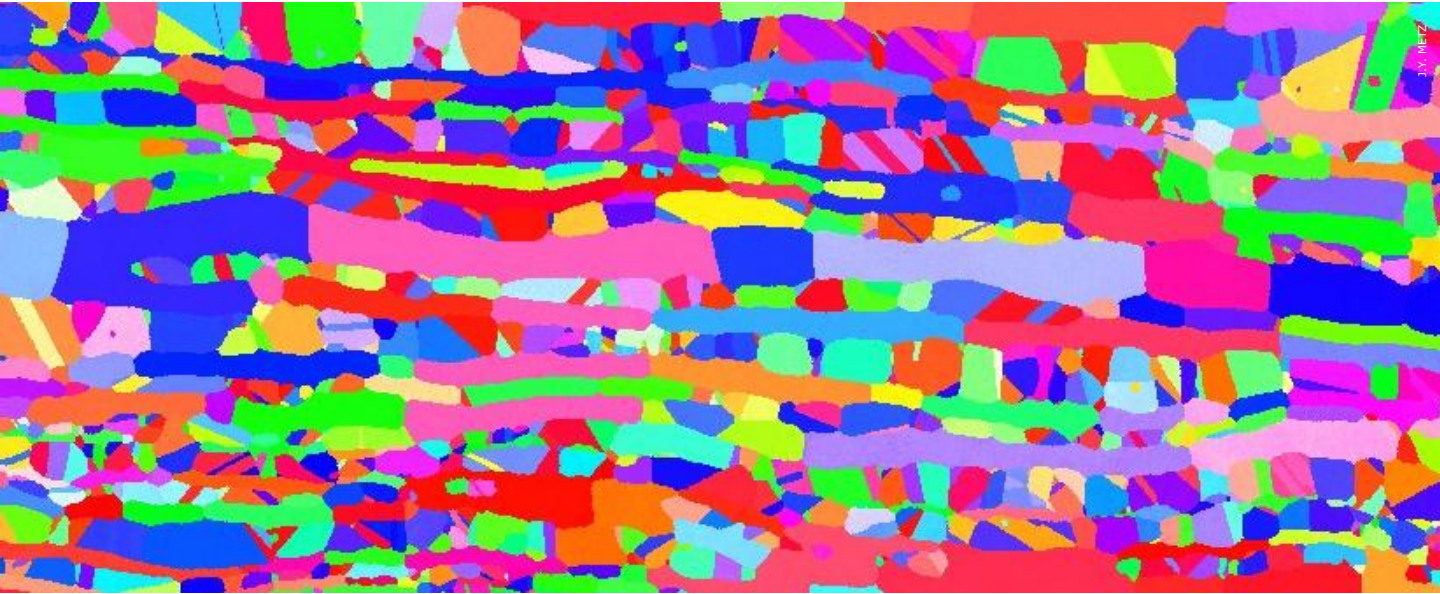


### Coming soon:

- European Committee for Treatment & Research in Multiple Sclerosis -ECTRIMS 2012 (4500 delegates)
- International Conference for Magnetic Resonance in Biological Systems - ICMRBS 2012 (1000 delegates)
- Pneumology 2012 (4500 delegates)
- Synchrotron Radiation International 2012 (1000 delegates)
- European Congress on Nuclear Medicine - EANM 2013 (4000 delegates)
- Scoliosis Research Society Annual Meeting (1200 delegates)
- Hopipharm 2013 (1200 delegates)
- European Atherosclerosis Society Congress – EAS 2013 (3000 delegates)
- European Congress On Supraconductivity - EUCAS 2015
- World Congress on Angiology 2016



# 6. The Congress site



## 6.3 A quick glance

### Dates

We propose EMC 2016 be held

**from Sunday August 28<sup>th</sup> to Friday September 2<sup>nd</sup>, 2016:**

- Saturday August 27<sup>th</sup> & Sunday August 28<sup>th</sup>, 2016: Setup and Welcome reception
- Monday August 29<sup>th</sup> to Friday September 2<sup>nd</sup>, 2016: Congress

We are not aware yet of any international conference concerning directly our community and planned at the same time. This period is the end of summer time in Lyon, offering wonderful conditions to enjoy the city and its surroundings with a very clement climate (15-25° during daytime).

### Proposed format *See details in the next pages*

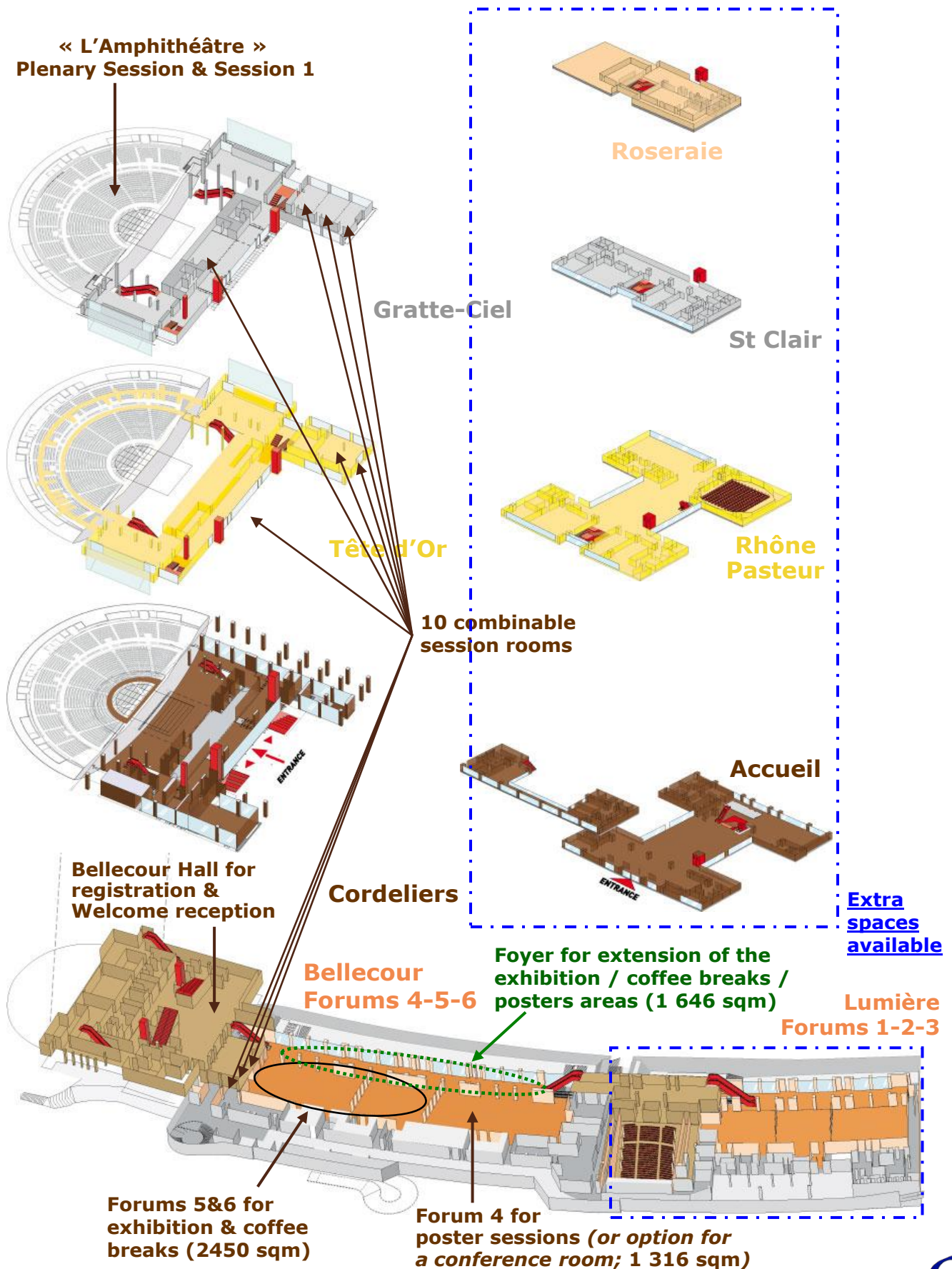
- Plenary sessions: all daily plenary sessions and the official opening session will take place in a semi-circular auditorium, the "salle 3000" Amphitheatre (easily configured from 1000 to 3200 seats), which *might* further be used for the most frequented symposium during the whole week (session 1).
- Daily physical and biological sessions will be held in the building aisle adjacent to the Amphitheatre (sessions 2 to 6 in combinable rooms from 80 to 280 seats); an additional room of 390 seats is available if needed for any extra session (session 7).
- The registration and Welcome reception on Sunday's evening will take place in the Bellecour Hall (1 800 sqm).
- The exhibition & coffee breaks will be organised in a convivial and continuous environment of about 2500 sqm (Forums 5&6), adjoining the posters area of 1300 sqm; this space can further be made larger owing to the adjacent Foyer of 1500 sqm.

The LCC possesses 16 additional rooms, from 50 to 900 seats, an additional Forum (4, 1 316 sqm) and 3 000 sqm of multifunctional spaces. Dedicated rooms can then easily be booked for any private meetings during the Conference.

**A virtual visit is available here: <http://www.ccc-lyon.com/visite/GLevent.swf>**



# 6.4 Spaces for EMC 2016



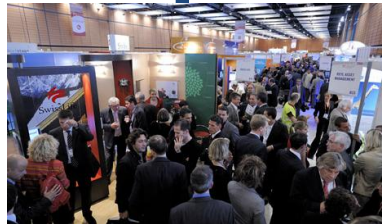
# 6. The Congress site



## 6.5 Guided tour

**Bellecour hall  
(1 800 sqm) for  
registration and  
Welcome reception**

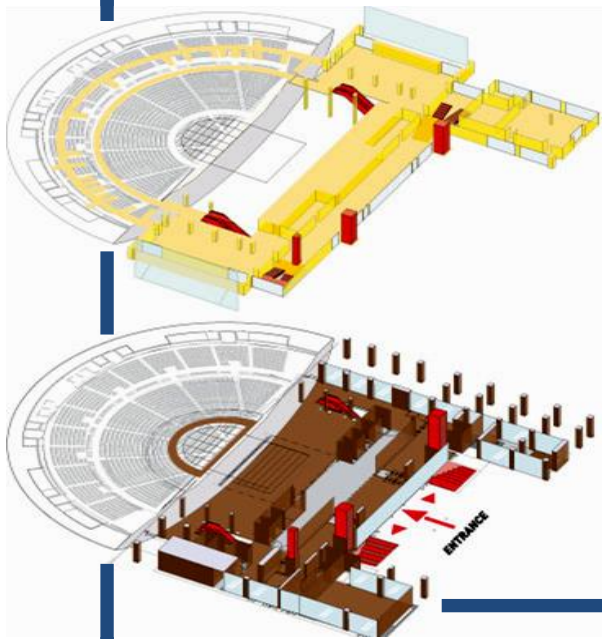
**Forums 5&6 for exhibition & coffee  
breaks (2 456 sqm) and forum 4 (1 316  
sqm) for poster sessions; foyer nearby  
(1 646 sqm) for space extension**



# 6. The Congress site

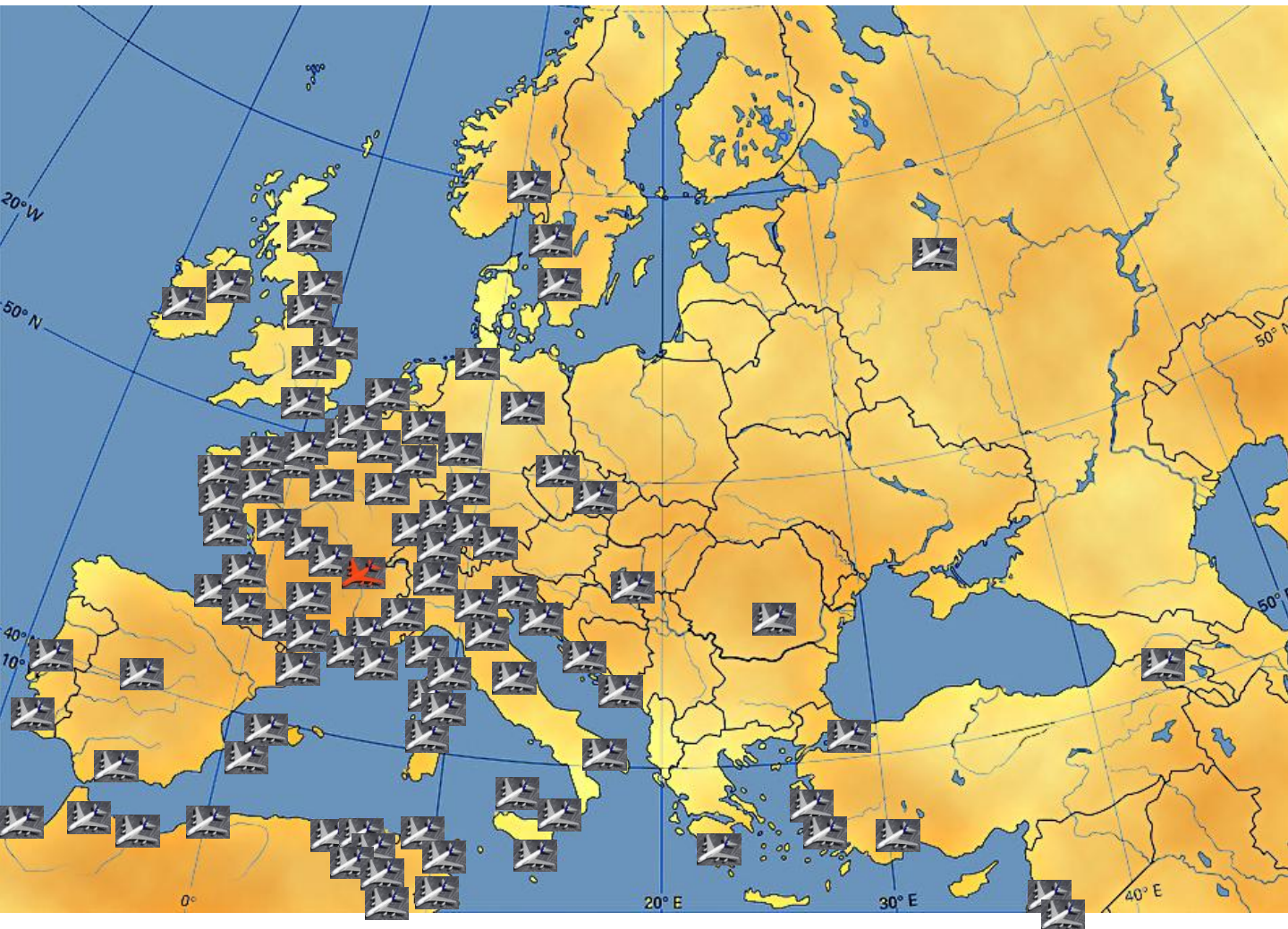


**The Amphitheatre "salle 3000": a typical and unique semi-circular Auditorium** (here in a reduction configuration for 1500 seats as recommended for EMC 2016) for **opening session and daily session 1**



**5 conferences rooms for daily sessions 2, 3, 4, 5 and 6 (resp. 280, 200, 190, 180 and 80 seats); more space available for any additional session (390 seats)**

# 7. Coming to Lyon



## 7.1 At the crossroads from Europe

Lyon at the cross road of Europe can be reached easily by **plane, train or car**.

Its international airport Lyon Saint Exupéry (LYS) is the second French regional airport. Lyon is also a rail hub with 3 train stations with high speed connection (TGV). At the heart of Europe, Lyon is very well connected by motorway with direct access from many major centres.

### By air:

Situated at only 25 km east from Lyon city centre, Lyon-Saint Exupéry experienced the highest traffic growth among the major French airports.

- Nearly **8 million passengers in 2008, 10 million passengers in 2012**

- One hundred domestic, European and intercontinental destinations: all major European cities accessible by daily direct flights

- The second Air France hub and the base for low-cost *easyJet* and also *Aer Lingus*, *Atlas Blue*, *Blue Air*, *BMI*, *Jet4you* connected to **London Stansted, Heathrow, and Gatwick, Madrid, Rome, Dublin, Lisbon, Berlin, Barcelona, Porto, Venice, Manchester** and **Bucharest: 71 scheduled airlines** and charter companies, **81 scheduled destinations**, (including 49 international routes), 20 TGVs per day.

*Since August 2010, the express tramway, RHONEXPRESS, links the Lyon-Saint Exupéry International airport to the central Lyon Part-Dieu railway station in 25 minutes, with departures every 15 minutes.*

# 7. Coming to Lyon



## By rails:

The centre of Lyon is connected to all the major French cities by the high-speed TGV train or lines via the 3 train stations of Perrache, Part-Dieu and Lyon-Saint Exupéry.

Lyon Part-Dieu is one of the first European station In terms of connecting passengers with 51 million passengers per year, more than 500 trains per day (included more than 150 TGV) and 325 local intercity connections.

*Lyon is only at 1h55 from Paris and connected to European cities as London via Lille (5h00), Brussels (3h40), Geneva (1H50) and Torino (4h20).*



## By road:



Lyon is a major automotive hub for central and southern France; *Lyon is two hours away from the Alps and less than three hours from the beaches of the Mediterranean Sea.*

Some representative distances are:

- Paris-Lyon: 465km (A6),
- Marseille-Lyon: 315km (A7)
- Genève-Lyon: 149km (A40)
- Montpellier-Lyon: 303km (A7-A9).



# 7. Coming to Lyon



## 7.2 Lyon intra-muros

### Public transportation in Lyon:

Lyon's public transportation system, known as TCL (*Transports en Commun Lyonnais* – Lyon Public Transportation), is regarded as one of the most efficient in the country. The extensive network of undergrounds and tramways ([http://tcl.fr/documents/pdf/metro\\_tram.pdf](http://tcl.fr/documents/pdf/metro_tram.pdf)) or buses of the T.C.L. enables rapid and easy transport from one place to another in the city and its suburbs:

- 4 underground lines
- 2 funiculars railway run from Vieux Lyon metro station to Saint-Just and Fourvière respectively.
- 3 tramlines
- Over 120 urban bus routes

***During the congress, free public transport passes for all participants will be provided (saving 2.50€ per day and per person).***

*The congress centre is situated at only 10 min from city centre using public transport : Higher frequencies of the C1 bus line which connects Part-Dieu train station to Lyon Convention Centre during the congress, 12 min from Lyon Part-Dieu train station and less than 30 min from Saint Exupéry airport.*

### Cycle in Lyon:

Lyon has an increasing number of safe cycling routes.

Lyon has also a public bicycle service called **Vélo'v** (<http://www.velov.grandlyon.com/>) which allows travellers, after registering a credit card, to pick up, and drop cycles to and from over 300 points around the located in city (6 of which are the Cité Internationale - Convention Centre).



### Walk in Lyon:

The city centre is not so big and most attractions can be reached from each other on foot. The walk from Place des Terreaux to Place Bellecour, for example, is about 20 min. The rule of thumb is that metro stations are generally about 10 min walk apart.



# 8. Accommodation and Facilities



## 8.1 Accommodation for all

With **more than 11 900 hotel rooms and 2 900 rooms in** apartment hotels, Greater Lyon offers a choice between the charm and elegance of *châteaux hotels* and the dependable comfort of major international chains (Accor-Sofitel, Mercure, Best Western, Boscolo, Concorde International, Hilton International, Holiday Inn, Louvre Hotels, Relais & Châteaux, Radisson BLU, Warwick, NH Hotels...).

**Hotel capacity** (in 2011):

- **Hotels 4\* and 5\*:**                   **1 746 rooms**
- **Hotels 3\*:**                               **3 352 rooms**
- **Hotels 2\*:**                               **4 572 rooms**
- **Hotels 1\*/0:**                           **2 267 rooms**
- Apartment hotels (all categories): 2900 apartments
- Campus Residential Hall: 800 rooms

### Hotel projects

The development of hotels in *Lyon by the year 2012* will total **1600 additional rooms**.

The main projects are:

- A hotel complex multi-chains in the Part-Dieu area with 314 rooms
- In the Confluence area, in the centre of Lyon, a 150 rooms 3\* hotel

**Thanks to special agreements with our member hotels**, the Lyon convention bureau is able to rapidly make room blocks for events of any size, many years prior to the Congress.

# 8. Accommodation and Facilities



## Hotel sites

This map shows the location of *some* hotels in Lyon.

According to the **Free public transport** passes for bus, metro and tramway offered by the **City of Lyon** for all participants, the access to any of these establishments will be easy.

On the site of the **Centre Des Congrès** at the LCC, 500 **rooms** are Available (among them 300 '2\*' including **Apartments** in a Residence). 1000 rooms are located at a **15' walk** from the **CCL**.



# 8. Accommodation and Facilities



## 8.2 Students facilities

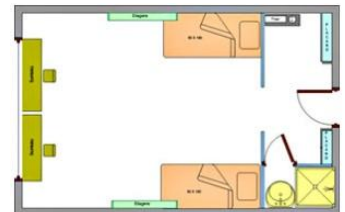
Attracting students, young researchers and early career researchers at EMC 2016 in Lyon is a priority for us. We aim at providing them not only an outstanding scientific programme during the Conference, but also the easiest and most enjoyable conditions for their venue in the City.

CITÉ | CENTRE DE CONGRÈS | LYON



**Special accommodation** with low budget will be made available, owing to the courtesy of the INSA (National Institute for Applied Science), 15' walking distance from the Congress site, on the university Campus Lyon-Tech. Rooms for students are then available on request for those who prefer a student-type accommodation rather than a classical one in hotels.

[www.insa-lyon.fr](http://www.insa-lyon.fr)



**Student events** can also be thought to be organised in some fashioned spots, such as:

- **the Ninkasi**, a Micro brewery with industrial style decoration (standing capacity: 600 persons)
- **la Plateforme**, a Barge Located at the heart of Lyon, offering 600 sqm for all types of events (standing capacity: 700 persons)





# 9. The social scene



## 9.1 Reception and banquet

### Welcome at the City Hall of Lyon

The decoration of City Hall is inspired by the sumptuous decors of the Baroque period prized by the court of Napoleon III. In total, 8 rooms, with a standing capacity of 1000 persons, are proposed for welcoming the EMC 2016 participants in the 'Great Lyon' by its Major, presently M. Gérard Collomb.



### Suggested venues for the banquet

Lyon has many prestigious venues able to host the gala dinner, as well as other parties and/or private receptions:

#### Casino le Lyon Vert

The largest 'Grand Casino' in France, le Lyon Vert, proposes reception rooms with a total capacity of 800 seats (1000 persons in cocktail) located in the elegant park in Charbonnières-les-Bains.



#### Les Substances

An ideal location on the Saône river in the city, this XVII's century building Has been re-configured as an Arts' house; up to 800 persons for a banquet, 2000 in cocktail.



#### La Sucrière

Built in the 30's and enlarged in 1960, Sugar is an old sugar factory used as a warehouse until the 90s. Converted in 2003, it became an emblematic exhibition place of 7000 sqm in the heart of the new district of Confluence. Capacity up to 1500 persons.

#### La Brasserie Georges

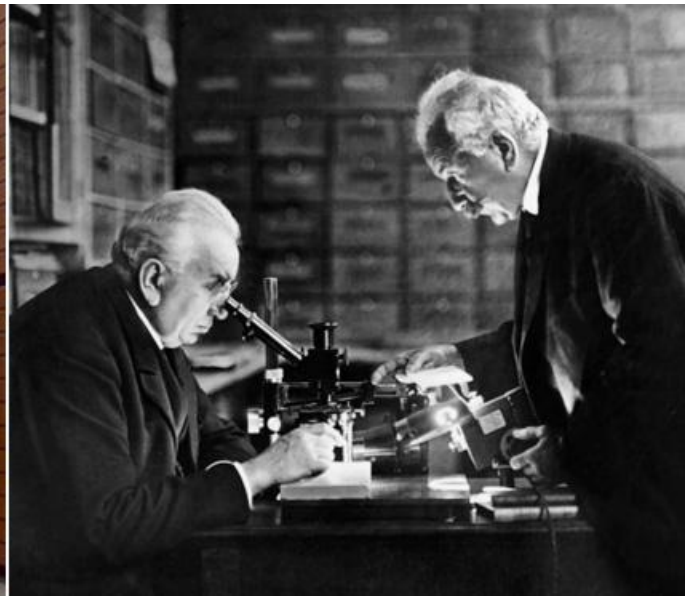
A "Art Déco" ambiance from the 1925 years. Capacity: 800 (banquet), 1000 (cocktail).

#### L'Abbaye de Collonges

The famous Paul Bocuse restaurant: Capacity of 450 seats (600 in cocktail).



# 9. The social scene



## 9.2 Accompanying persons: not to be missed!

Accompanying guests will have the opportunity to discover some of the treasures of Lyon, a city with great history and culture background.

### Lyon Renaissance district

This Renaissance district, listed by UNESCO, is the largest area of its kind in France. It consists of 3 separate villages: St Georges to the South, St Paul to the North-East, and St Jean in the middle.

### Enter the world of Silk through "Traboules" passageways...

Lyon is the capital of silk weaving in France. You will discover the "Traboules" (passageways) winding down the hill of the Croix-Rousse where 30 000 silk weavers used to live in the 19<sup>th</sup> century. At the silk printing workshop, printers will demonstrate Lyon's traditional know how.

### Fourvière's church: a major building of Lyon heritage

Built between 1872 and 1896, by the architects Pierre Bossan and Sainte-Marie Perrin. Its style is eclectic: austere outside and richly ornamented inside with mosaics stained glass windows and marbles.

### Art, history, civilizations, sciences

**Among 38 museums in Lyon: The Fine Arts Museum, The Gadagne Museum** (in a superbly renovated Renaissance building, houses the **Lyon Historical Museum** and the **International Puppet Museum**), **The museum of cinema (Lumière brothers:** In 1895, the City of Lyon became the birthplace of the 7<sup>th</sup> art, when Auguste and Louis Lumière invented the "Cinématographe"), the **Lyon Historical Museum** (after a visual and auditory immersion in the 21st century city, the visitor embarks on a voyage to the capital of Gaul, to Lyon during the French Revolution, to the city of silk weavers,...), the **Gallo-Roman Museum of Lyon** (located near the archaeological site on the slopes of the Fourvière hill, formerly in the centre of the Roman City of Lugdunum, founded in 43 B.C, this museum hosts a superb collection of mosaics, sarcophagi and statues), **the Centre for the History of the Resistance and Deportation** (for Lyon, "Capital of the Resistance", it was vital to create a History centre that would portray its role during the Occupation), **The Museum of Contemporary Art, the Textiles and Decorative Arts Museum,...**



# 9. The social scene



## 9.3 Touring options

**A Dedicated Tourist Office booth** will be available during the event to allow any private excursion to be planned during and/or after the congress.

### Excursions: 30 min (by car) from Lyon

**The "Beaujolais":** Tour through the Pierres Dorées villages, discover and visit the wine villages, with an initiation to oenology in a castle in the middle of the vineyards.

**Péruges:** explore an authentic original medieval fortified city.

### Excursions: 1h30 min from Lyon

**Burgundy:** Tour through the Côtes de Beaune and the Côtes de Nuits, tasting of prestigious vintage: Meursault, Pommard, Aloxe-Corton. Discover the Dukes of Burgundy capital, **Beaune**, a town rich in wealth and symbolism, with its countless wine-cellars huddled round the historic Hospices where you can admire the famous painting of the "Last Judgement" by Roger van der Weyden.

**The Alps:** one-day excursion to **Chamonix** at the foot of the **Mont Blanc**, to admire the highest Alpine summits, the thrilling Mer de Glace and the Aiguille du Midi.

Wander through the flower-lined streets of the old town of **Annecy** whose canals will remind you of Venice, and visit the Palais de l'Isle, a remarkable castle that houses the museum of local history.

**Provence:** between the olive groves and fields of lavender, it would be difficult not to be swayed by the charms of Provence, with its southern intonations, its colourful and fragrant markets, its old stone village clinging to the rocks, its quiet little churches. Discover the small provencal markets, Nyons, olive capital, the gallo-roman sites: Vaison, Orange, St-Rémy-de-Provence, Arles...

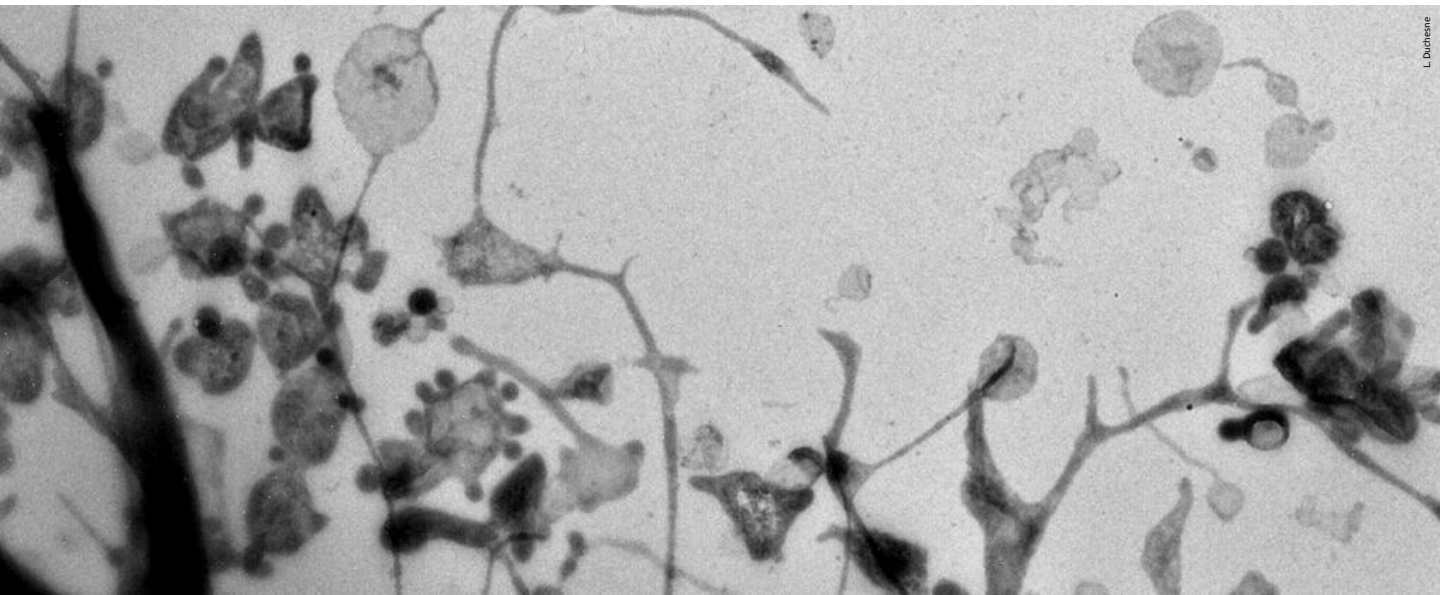
At the top of the cliff is the scenic route of the **Ardèche Gorges**, from which you can follow the course of the river and discover the never-ending sight of unspoilt natural wonders.

### Excursions: 3h from Lyon

**The French Riviera:** its famous beaches: Nice, Antibes, Juan-les-Pins; the countryside: St Paul de Vence, Grasse...



# 10. Budget



## 10.1 Overview

### Expectable attendance

We have prepared three alternatives budgets according to the expectation of three attendances: **1 000, 1 400 and 1 800 total participants**. These simulations were established with the assistance of a PCO.

Significant support will be accorded to invited speakers and young scientists. As mentioned in section 4.2, our intention is to **promote the attendance of young scientists (YS)** with non-permanents positions; we will thus deliver two kinds of financial support on a merit basis:

- The major part of funded YS will benefit from a **FREE INSCRIPTION** (for the middle scheme of 1400 participants, this represents a total of **102** in the following realistic simulation)
- A smaller ratio of YS will receive a **SCHOLARSHIP** estimated to 300 € exc. VAT in addition to the FREE INSCRIPTION (i.e. **25** for 1400 participants).

Two free admissions per exhibitor will be offered. According to this policy, the total participant numbers lead respectively to **617, 979 and 1 341 paying participants**, which themselves can be subdivided as indicated in the following table.

attending assistance	1 000	1 400	1 800	
<i>total delegates</i>	840	1240	1640	← <b>Total participants: delegates + YSs, VIPs &amp; invited speakers, exhibitors</b>
<i>total "full delegates"</i>	630	930	1230	← <b>25% of delegates are expected to be Young Scientists (YSs)</b>
<i>total "Young Scientists" (YSs)</i>	210	310	410	←
<i>Free "full delegates" (VIP)</i>	144	144	144	← <b>...includes invited persons and chairs of scientific sessions</b>
<i>total free YSs</i>	69	102	135	← <b>1/3 of YSs will be eligible for a free attendance from the COC</b>
<i>Free YSs + scholarship</i>	17	25	33	← <b>25% free YSs will be further eligible for a travel scholarship from the COC</b>
<i>number of paying full delegates</i>	486	786	1 086	
<i>number of paying young scientists</i>	141	208	275	← <b>...possibly sponsored from other sources</b>
<i>total paying participants</i>	617	979	1 341	

# 10. Budget



## Attendance fees

Registration fees are adjusted as shown below. Standard rates (early registration) are expected to be **405 €** for **Full Delegates** and **half of this amount** for **Young Scientists**. For **Full Delegates**, indicated fees concern the 'average' **Full Delegate** status for the entire congress duration. They include the attendance to the congress (any scientific sessions), to the technical exhibit and all coffee breaks, and to the welcoming receptions (Sunday evening; the banquet is excluded). Full delegate rate comprises 2 volumes of the Proceedings.

fees	<i>full delegates</i>	<i>standard rate (incl. VAT)</i>	<b>405 €</b>
		<i>late registration (incl. VAT)</i>	<b>490 €</b>
	<i>young scientists</i>	<i>standard rate (incl. VAT)</i>	<b>202.5 €</b>
		<i>late registration (incl. VAT)</i>	<b>250 €</b>
	<i>daily rate</i>	<i>(sessions and exhibition only, including coffee breaks)</i>	<b>125 €</b>



Free *wifi* will be available for all attendants with an overall coverage except perhaps in the conference rooms to ensure quiet.

## Exhibitors

The technical exhibition will take place in a continuous area of 2 456 sqm which can be further extended by 1 316 additional sqm (see section 6). The Lyon Convention Centre has a great experience of technical exhibitions and can offer a large variety of optional equipments for standard stands on a basis of 9 sqm units. Fixing the **price for exhibitors to 480 €** excl. VAT / sqm for a **standard**, semi-equipped (usual basic set: stand walls, elementary electrical fitting), and **425 €** for **an un-equipped** sqm, allows final budgets to be simulated in the three alternatives of 1 000, 1 400 and 1 800 participants according to an exhibition stand surface of **850 sqm**.

Exhibition prices	<i>semi-equipped sqm</i>	<b>480 €</b>	<i>Surface of semi-equipped stands</i>	<b>545 sqm</b>
	<i>un-equipped sqm</i>	<b>425 €</b>	<i>Surface of un-equipped stands</i>	<b>305 sqm</b>

## 10.2 Finances (2013 rates)

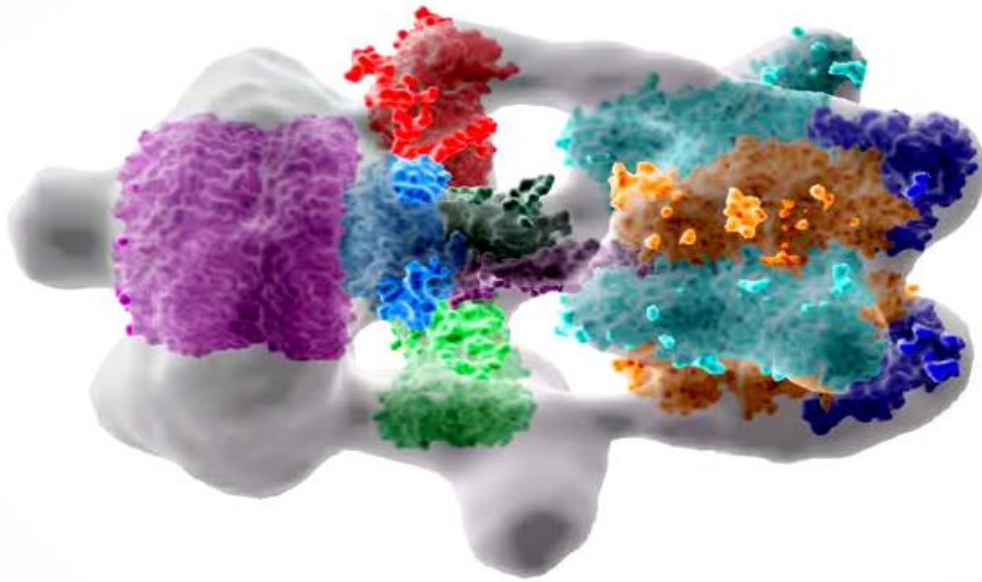
Reasonable and realistic simulations were performed on the basis of the floor spaces presented in section 6.4 and the attendance scheme considered in 10.1. In the case of the lowest assistance of 1000 participants, the "Lumière" amphitheatre (900 seats) is preferred to the "salle 3000" one, too large for this attendance. This adjustment leads to a balance even more favourable than in the case of 1400 participants with the "salle 3000".

The goal of the future Congress Organising Committee, in partnership with a professional PCO agency, will however be to make this event unique and unforgettable with a target of at least 1800 participants.

attending assistance <i>total paying delegates</i>	1000	1400	1800
	627	994	1 361
<b>EXPENSES</b>	<b>amount (excl. VAT)</b>	<b>amount (excl. VAT)</b>	<b>amount (excl. VAT)</b>
spaces and rooms rental	84 000 €	173 695 €	173 695 €
technical services (audiovisual, wifi, exhibition, lighting, security, poster panels, signage,...)	136 000 €	143 696 €	143 696 €
catering / coffee breaks	30 600 €	42 840 €	55 080 €
<b><i>total LCC</i></b>	<b>250 600 €</b>	<b>360 231 €</b>	<b>372 471 €</b>
SFμ secretary	4 500 €	4 500 €	4 500 €
PCO honoraires (base MCO)	98 623 €	98 869 €	127 916 €
pre-congress <i>local committee expenses</i>	11 000 €	11 000 €	11 000 €
communication (badges / e-badges, bags, program,...)	33 000 €	46 200 €	59 400 €
pre-congress edition (flyers, mailing, 1°-2° circular...)	15 000 €	15 000 €	15 000 €
Proceedings (2 free volumes per delegate)	18 900 €	27 900 €	36 900 €
<b><i>total other costs</i></b>	<b>181 023 €</b>	<b>203 469 €</b>	<b>254 716 €</b>
Sunday welcome reception	12 000 €	16 800 €	21 600 €
invited speakers	96 000 €	96 000 €	96 000 €
cost for student scholarships	5 100 €	7 500 €	9 900 €
transportation, special events	3 960 €	5 544 €	7 128 €
<b><i>total conference</i></b>	<b>117 060 €</b>	<b>125 844 €</b>	<b>134 628 €</b>
insurance 'force majeure'	15 000 €	15 000 €	15 000 €
provision (unexpected costs: 5%)	27 434 €	34 477 €	38 091 €
EMS fees	8 400 €	12 400 €	16 400 €
<b>total expenses</b>	<b>599 517 €</b>	<b>751 421 €</b>	<b>831 305 €</b>
<b>INCOME</b>			
sponsoring (including support from institutions)	80 000 €	80 000 €	80 000 €
exhibition	391 225 €	391 225 €	391 225 €
inscriptions full delegates	173 209 €	280 128 €	387 046 €
inscriptions students	24 318 €	35 873 €	47 429 €
social (banquet,...)	2 475 €	3 465 €	4 455 €
<b>total income</b>	<b>671 226 €</b>	<b>790 691 €</b>	<b>910 156 €</b>
<b>balance</b>	<b>71 710 €</b>	<b>39 270 €</b>	<b>78 850 €</b>



# 11. Summary



## **European Microscopy Congress in 2016 with Lyon, only!**

### **When?**

**from Sunday August 28<sup>th</sup> to Friday September 2<sup>nd</sup>, 2016:**

- Saturday August 27<sup>th</sup> & Sunday August 28<sup>th</sup>, 2016: Setup and Welcome reception
- Monday August 29<sup>th</sup> to Friday September 2<sup>nd</sup>, 2016: Congress

### **Where?**

#### **At the Lyon Convention Centre:**

- CITE | CENTRE DE CONGRES | LYON, [info@ccc-lyon.com](mailto:info@ccc-lyon.com)  
50 Quai Charles de Gaulle, F-69463 Lyon cedex 06
- A 1 800 sqm hall for registration and Welcome reception. Forums (up to 3 772 sqm) and adjacent foyers (1 646 sqm) for exhibition & coffee breaks and poster sessions. An amphitheatre (with various configurations up to 3000 seats) and 5 conferences rooms for daily sessions (280, 200, 190, 180 and 80 seats). more space available for any additional session (390 seats)
- 12 min from Lyon Part-Dieu train station and less than 30 min from Saint Exupéry airport, accessible through one hundred domestic, European and intercontinental destinations connecting all major European cities by daily direct flights. more than 500 trains per day (included more than 150 TGV) and 325 local intercity connections. Paris at 1h55; railway connections to European cities as London via Lille (5h00), Brussels (3h40), Geneva (1H50) and Torino (4h20).
- Greater Lyon: more than 11 900 hotel rooms and 2 900 rooms in apartment hotels

#### **For further information, please contact:**

##### **• the French Society of Microscopies (SFμ)**

[sfmu@sfmu.fr](mailto:sfmu@sfmu.fr), Case 243, Université Paris VI, 4 place Jussieu, F-75252 Paris cedex 05

##### **• Thierry EPICIER, President of the BID Committee for EMC 2016 in Lyon**

[Thierry.epicier@insa-lyon.fr](mailto:Thierry.epicier@insa-lyon.fr)







## Historic Site of Lyons

A city founded by Romans in the 1<sup>st</sup> century B.C.

**UNESCO World Heritage since 1998**

